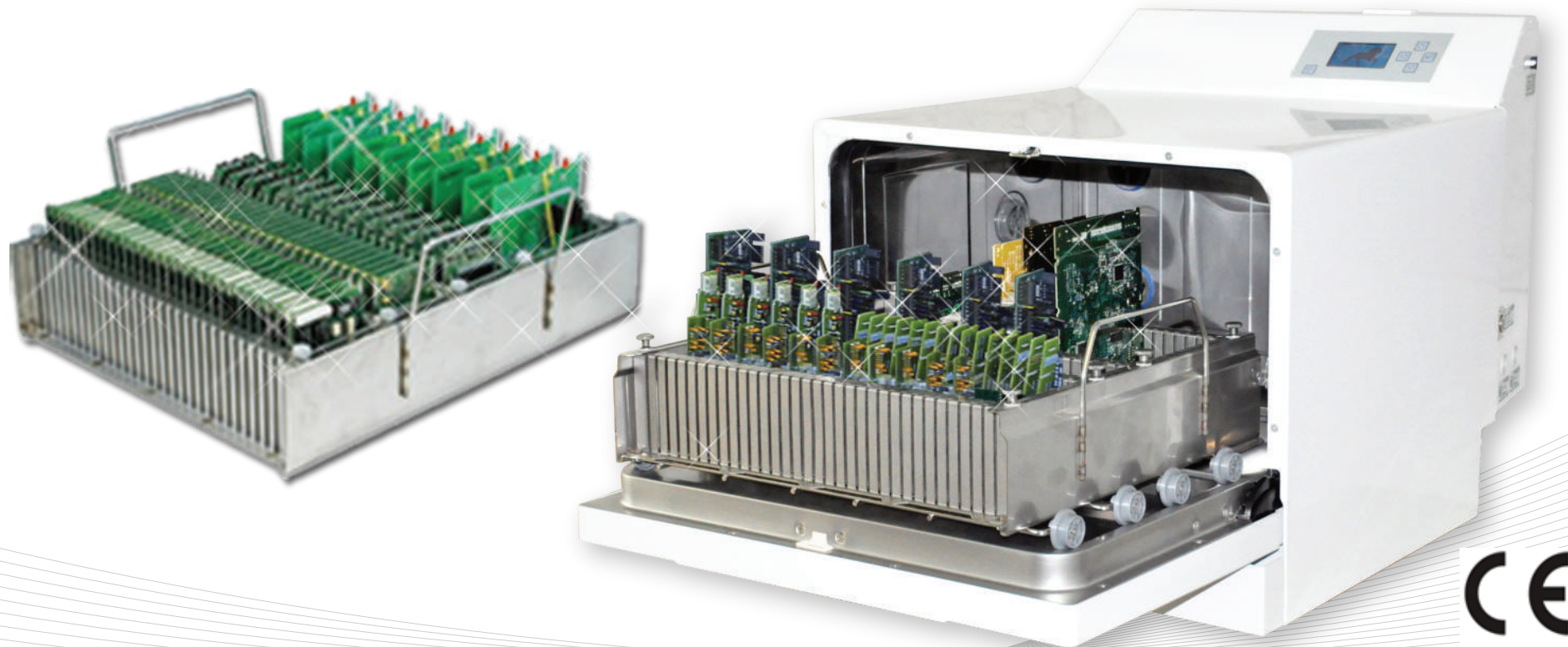
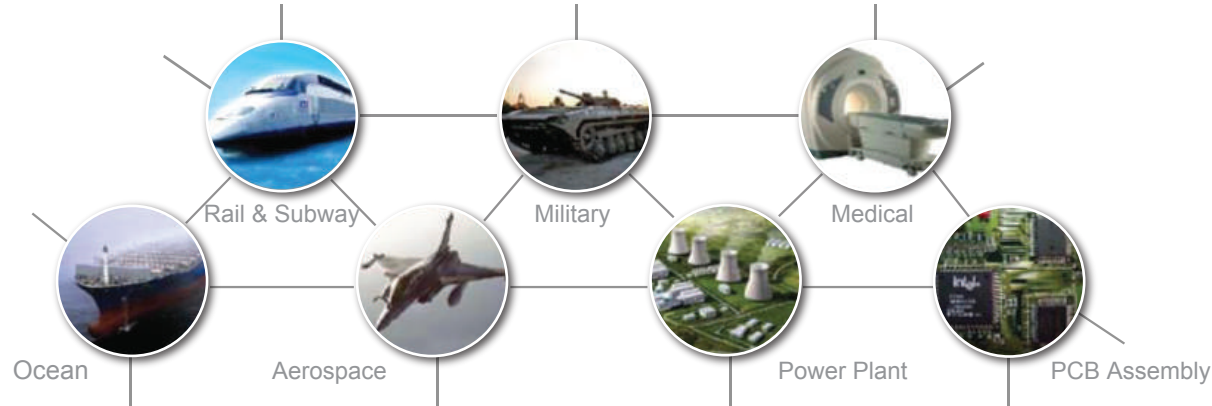


PCB Cleaning Machine

Water-based cleaning system

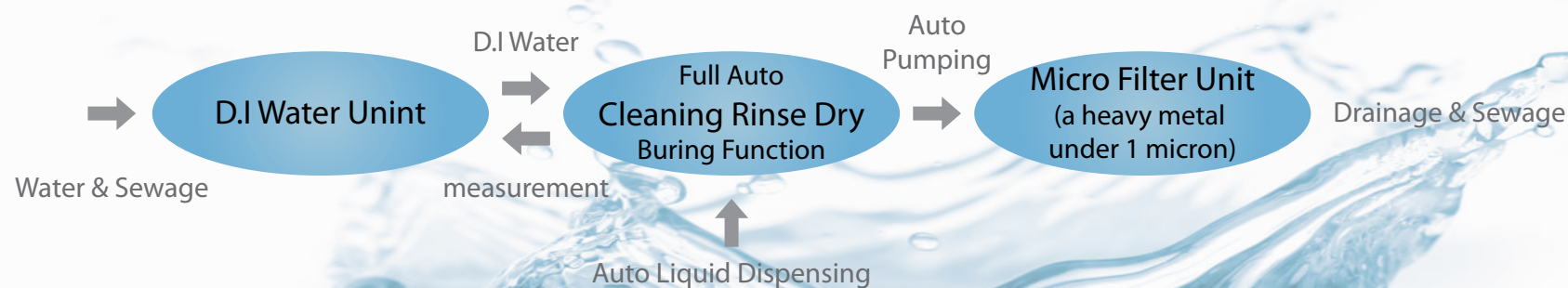


1000 cleaning model is automatic water-based cleaning system with special cleaning agents and hot air drying for printed circuit boards, paste misprints, small parts and so on.

The 1000 model provides

- More than MIL spec Factor 2000
- Stainless steel wash frame designed to receive the assembled printed circuit boards.
- Large graphic display with simple, clearly arranged user interface.
- Cleaning programs can be created individually.
- Monitoring the purity level of the final rinse water (conductivity measurement)
- Low washing agent consumption at a 3 liter washing solution
- Log output via RS232 printer interface

Cleaning Process



1000

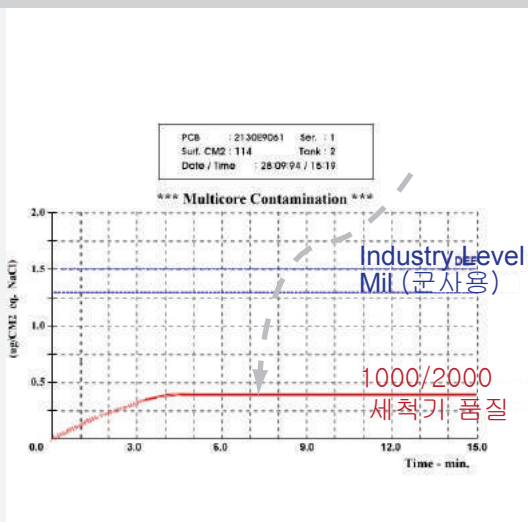
FEATURES

- Wash Temperature : 20 - 70 °C
- Wash Time : 5 - 40min
- Rinse Temperature : 20 - 70 °C
- Rinse Time : 2 - 10min
- Number of Rinsing : 0 - 5 Times
- Warm Air Drying Temperature : 40 - 100 °C
- Dry Time : 0 - 5 Hr
- Main Voltage : 220-240V, 50/60Hz
- AC Power Loading : 2.1KW
- Running Sound : Approx. 55 dB
- Basket Dimension (Internal)
: (W x D) 390 x 380mm
- Circuit board Size (Using Basket)
: Max. 390 x 260mm
- Circuit board Size (Using Frame)
: Max. 340 x 260mm
- Water Consumptions (Internal)
: Approx. 3L VE-water
- Dimension (H x W x D)
: 460 x 560 x 620mm, 24kg

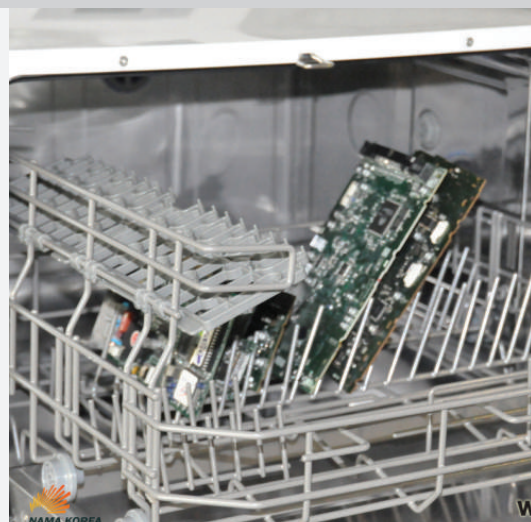
OPTIONS

- NE water desalination Unit
- Log Printer
- "AT" liquid
- "Mix-3" powder

Details of the equipment



PCB Cleaning



Basic Drawer



Large Graphic Display



Conductimetric
Measurement (op)



PCB Basket

QUALITY & RELIABILITY

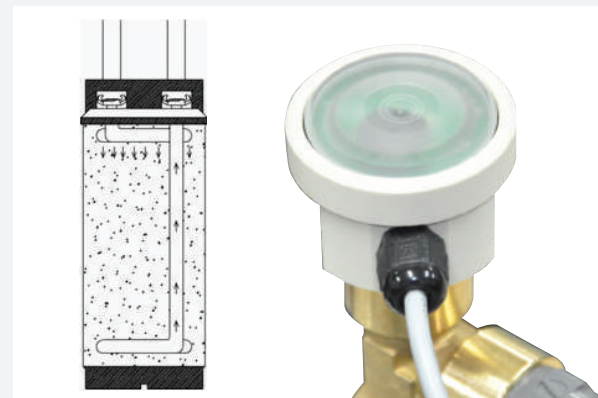
25년이상 200이상 업체의 사랑을 받아 온 1000/2000 세척장비
아래와 같은 분야에서 사용시 더욱 효율적입니다.

- 방산기기, 우주/항공, 선박, 엘리베이터, 철도, 의료장비, 통신, 휴대폰등
- 고품질 제품을 위한 세척단계가 필요한 업체
- 기타 유지보수를 위한 PCB보드의 세척이 필요한 업체
- 수작업 솔더링 Flux제거, Rework 작업 전/후 세척, 코팅전 세척등

Compact, Solid and Easy

The 1000 cleaning system is made by Stainless steel wash frame and a very compact size cleaning machine. Therefore, it is solid and doesn't need much space for installation. It can be placed anywhere

ECO Friendly NE-water desalination unit



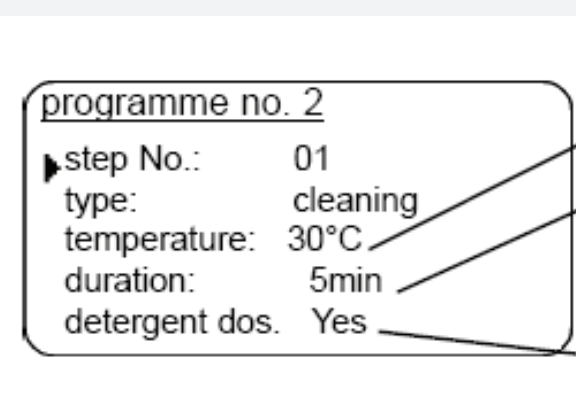
This cleaning machine can adopt NE-water desalination unit. By an optimal water distribution and water management techniques, the capacity of the high-exchange resin is used efficiently.

Large graphic display



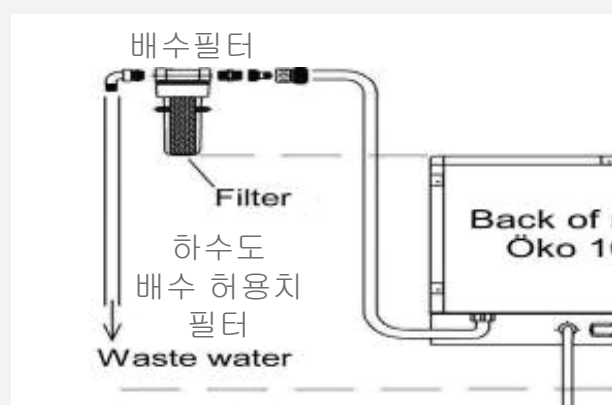
By providing a large graphic display, operators can find the menu and check progress of cleaning easily.

Cleaning programs



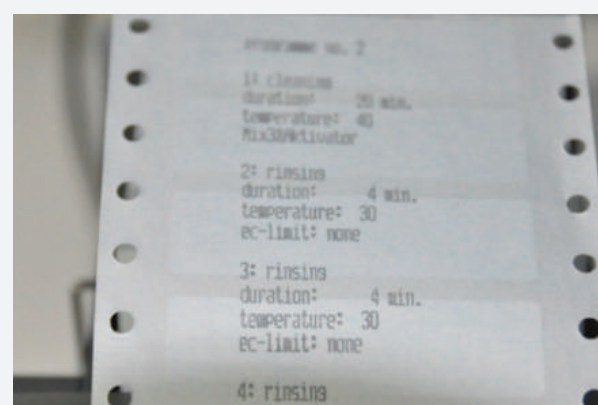
The program provides convenience. Each step can be removed can be selected. Also, detail value can be set by the materials.

ECO Friendly Monitoring the purity level



Monitoring the purity level of the final rinse water (conductivity measurement). The used rinsing water is passing cleaning unit so that you don't need to install additional cleaning unit for drainage.

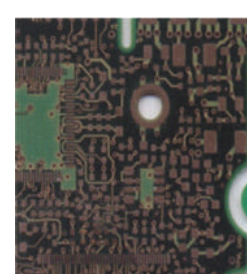
Log output



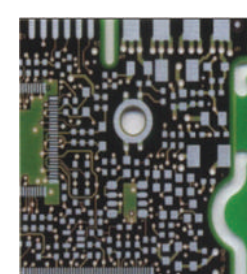
Via RS-232C port, each step's log can be printed. Detailed setting value and results can be checked by the log.

High Quality of Cleaning

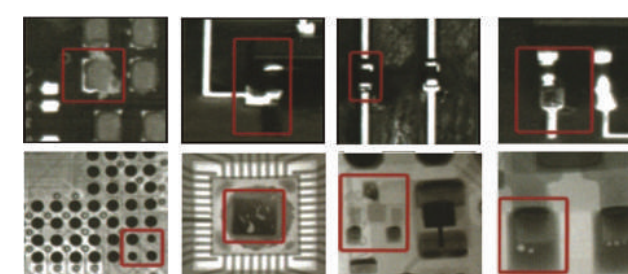
Basically, 1000/2000 PCB cleaning System provides more than "Mil-spec Factor 2000" PCB cleaning quality. It is compact but satisfactory result for you. 1000/2000 cleaning system help to gain high efficiency of cleaning process.



Before Cleaning



After Cleaning



Suitable for uBGA, Flip chip etc.

Product by