



261 is a 5 axis soldering robot with X, Y, Z, R and soldering wire feeding motion system. It is quipped with 400W high frequency heating system with rapid heat recovery, soldering tip is easy to be exchange with low cost. Break-tin automatic solder wire feeder can reduce burst tin that caused flux remaining on PCB when soldering under high temperature to improve the soldering quality. Self-developed software under windows 7 English OS is easy to operate.

Advanced indutrisla design make machine looks very beauty and solid structure and X/Y/Z/R step motor with its motion control system ensure machine run smoothly and precisely.

5 axis are all controlled by one combined 5 axis motion control card with PC, so it can integrate all the functions into one software like programming, soldering time setting, solder wire feeding length setting, motion control. It makes machine running more stable and easy to operate. The repeated accuracy of 24 hour"NRZ" continuous motion <0.06mm.

High frequency induction heating system with 400W power(600W optional), multi soldering heads and double work tables, various options provides rapid work cycles.



501  
Double work table system

**all Soldering**



Scan QR code  
Get 351 info

## FEATURES

- 5 axis Soldering (X,Y,Z,R,Feed)
- Movement Area  
: 250 x 250 x 80mm, 320°
- Max. Running Speed : 500m/s
- Repeat positioning accuracy :  $\pm 0.02\text{mm}$
- Platform Load : 5kg
- Temperature Range : 100 - 480 °C
- Min. feeding length : 0.1mm
- Wire Solder Feeder :  
- Standard : 1.0 - 1.2mm  
- Optional : 0.6 - 0.8mm
- Control Method :  
Touch Panel + Remote Controller
- Power : 220V 50/60Hz
- Air Pressure : 0.4-0.8MPa
- Dimension  
: 520 x 495 x 775 mm, 45kg

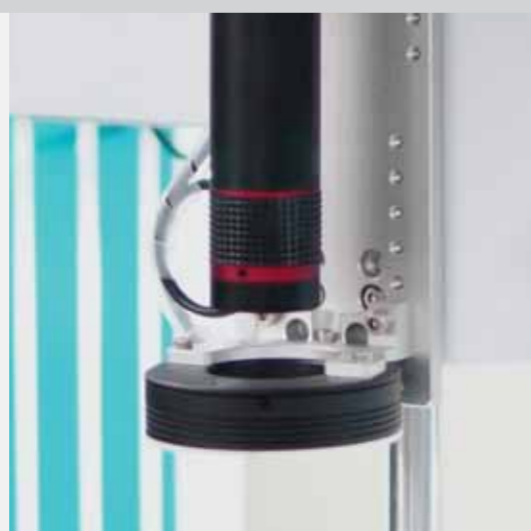
## OPTIONS

- 600W power heating
- CCD Camera
- Smoke Cover
- Cleaning Brush
- Thin wire feeder (without break tin)
- Safety Sensor
- Customized Fixture

## Details of the equipment



Soldering Head



CCD Camera (op)



Touch Panel



Remote Controller



Temperature Controller

# Automatic Soldering

Small/Medium & MULTI 제품 납땜작업에 적합한 본 장비는 아래와 같은 분야에서 사용시 더욱 효율적입니다.

- 수납땜의 작업효율성을 높이고, 균등한 품질을 원하는 제품
- 반복적인 수납땜이 필요한 제품
- 이형부품, DIP타입등의 부품, 커넥터, 배터리등
- 산업용, 전장, 통신, 방산, 의료장비, 선박통신 PCB조립에서의 이형부품등 다양한 작업등등

## Easy Control



Automatic soldering robot provides two control methods, a touch panel and a remote controller together. Easy to teach and set.

## High Frequency Soldering Tip



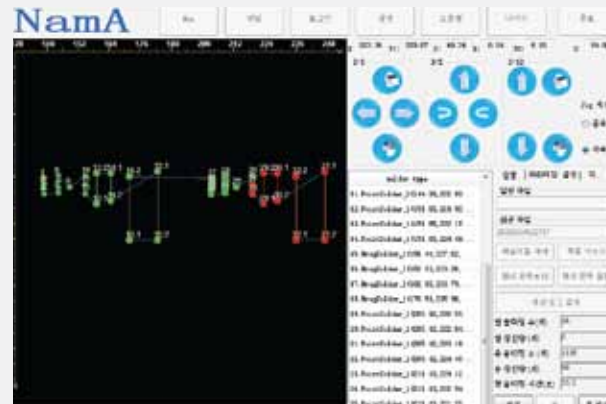
High frequency soldering unit provides 400W power and quick temperature rise and recovery. 600W soldering tip is optional. More than 70 kinds of tips.

## User Friendly Options



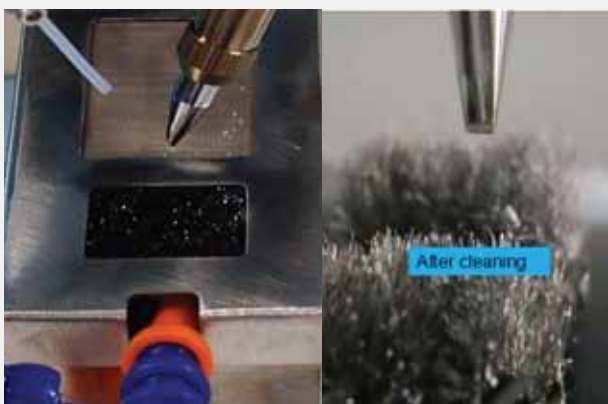
CCD Camera, Smoke Cover, Tin brush, Safety Sensor Guard, High frequency tip, Fixture custom and so on.

## Easy Program



Program can be set in Korean and provides Array / Correction / Coordinate copy and so on. Each point/drag parameter can be set each volume and time.

## Two Type Nozzle Cleaning<sup>(op)</sup>



For providing high quality soldering, it needs to clean a soldering tip with blowing or brush<sup>(op)</sup>. The cleaning step can be set at program or manually.

## Wire Solder Feeder



351 provides a wire solder feeder for stable and continuous feeding. A system recognizes the block or lack of the solder.

## Mark Point Recognition

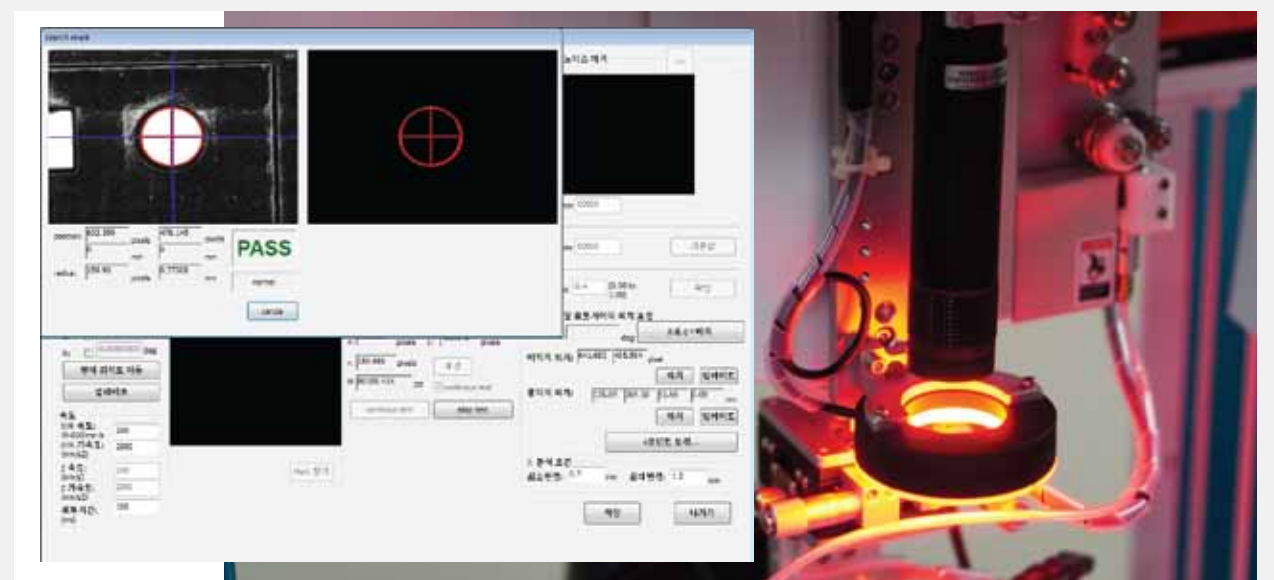
A CCD camera mark point recognition feature help more accurate soldering working.

**NEED** - not fixed location and many models

For various model and no fixture, a camera recognizes if a PCB is proper with current program or not.

**NO NEED** - fixed location and few models

For using few models and have a fixture, it is better to turn off mark point recognition feature.



Product by



T. 02 3141 0889  
E. info@namaSMT.com

Distributor

