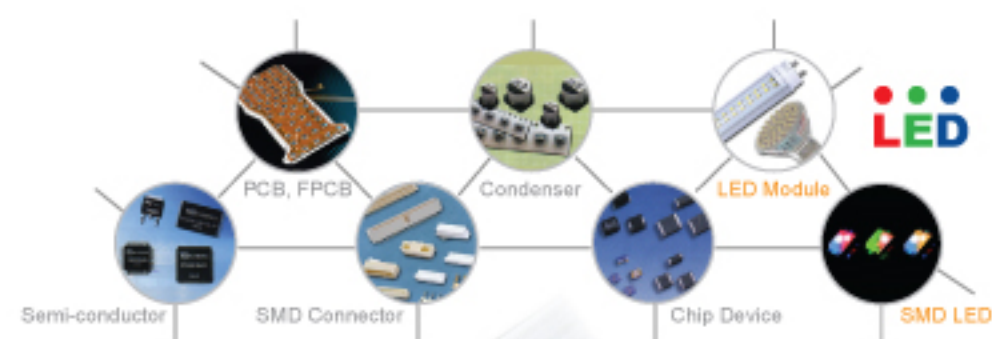




SMD Pick & Place

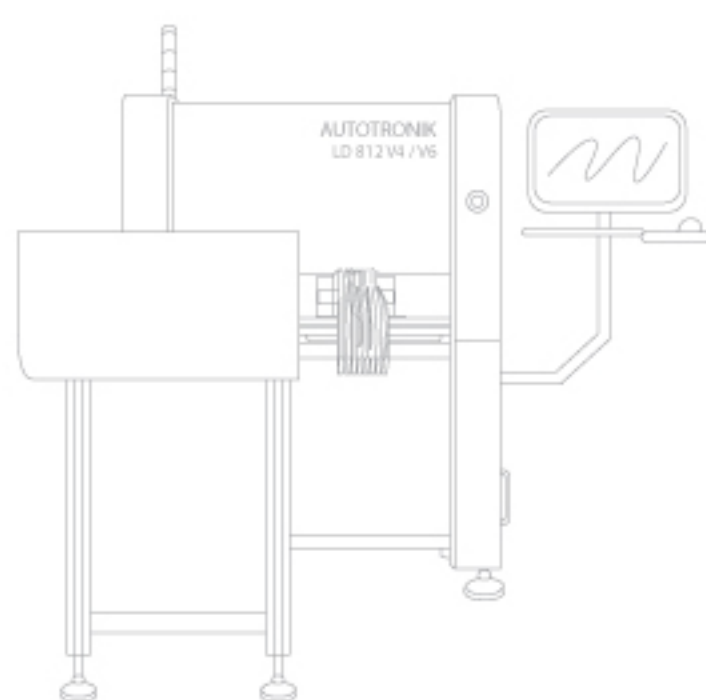
LED Pick & Place

LED Long PCB에 적합한 독일 Autotronic GmbH P&P 장비



The SMD placement machine LD812 has been specially designed for use in the LED PCBs medium and high production quantities . The machine supports the processing of printed circuit boards with a length of up to 1200 mm (optionally up to 1800 mm) .

Controlled air surges at the pick-up nozzles ensure the release of the " sticky " LED components during placement . Using the auto- selection system can be controlled to alternate feeder for empty indents without interruption to produce . In addition, allow the feeder band connections to minimize production interruptions.



Heavy welded frame ensure precise placement even at high speeds . The multi- head support achieved placement rates up to 15,000 Componets / Hour.

The model is equipped with an optical centering system that allows image processing directly on the placement head "Vision on the Fly" . Equipped with a dual conveyor system and intelligent software a high placement rate and efficiency in the pick -and-place process is guaranteed.

LED Pick & Place

LD812V4/V6

FEATURES

- Max. board size :
1200mm X 300mm (standard)
1200mm X 260mm (option conveyor)
- Board thickness : 0.2mm to 3mm
- Alignment principle :
Vision on the fly camera
- No. of placement heads : 4 or 6
- Placement rate : 15 000 / hour (IPC 9850)
- Component size : 1 x 0.5mm to 8 x 8mm
- Feeding capacity : Max.16 feeder (8mm tape)
- Placement accuracy : +/-0.05mm
- X-Y Axis Resolution : 0.02mm
- Z Axis Resolution : 0.02mm
- R Axis Resolution : 0.18 degree
- Operation system : Windows XP
- Programming : Easy programming
(option CAD import)
- Net Weight : 450KG
- Dimension (LxWxH) :
2630mm X 1130mm X 1490mm
- Air Pressure : 5.5 bar
- Standard Voltage : 220V(AC)
- Power : 2200W

OPTIONS

- 6 head
- 1500mm long board size
- Inline System (Conveyor)
- CAD import function

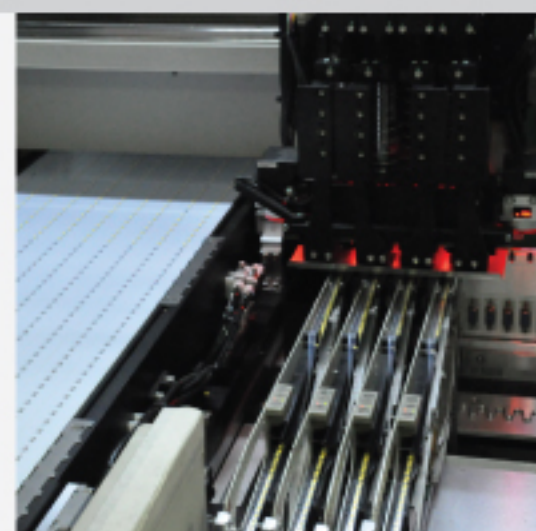
Details of the equipment



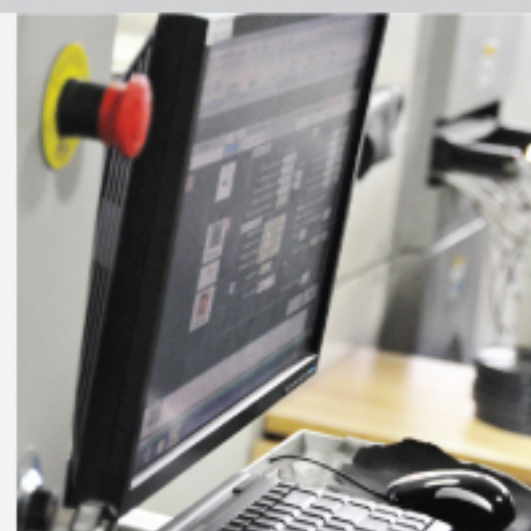
Inline 연결모습



Auto Nozzle Change Unit



4 Head &
Two Teaching Cameras



Remote Control



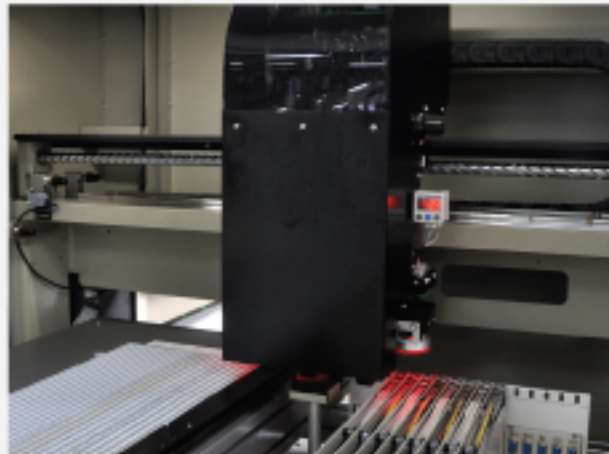
LED Nozzles
Teflon® nozzles(op)

QUALITY & RELIABILITY

Long LED Barlight 생산에 적합한 LD812 V4/V6 장비는 아래의 장점으로 장비가격 대비 높은 생산량을 보여주고 있습니다.

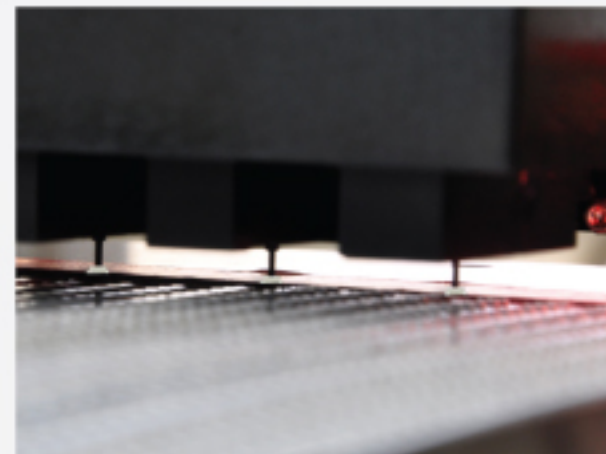
- 1.2 / 1.5 / 1.8m Long PCB Board 한번에 실장
- In-line / Off-line 선택 가능 및 대량생산시, 컨베이어 적합
- 각 헤드에 Fly Vision Camera 장착으로 정밀한 실장 가능
- 생산량에 따라 4헤드 / 6헤드 선택
- 독일 Autotronic 장비로 견고함을 제공 및 타제품 대비 저렴한 가격

Heavy-duty Welded, Uni-body Steel Frame



Heavy-duty welded, uni-body steel frame provides stability for precision placements even at high speeds

Vision on the Fly Alignment Cameras



Upward-aimed true 'Vision On the Fly' Alignment cameras on the pick & place heads allow easy set-up for a wide range of LED components

Various PCB Board Type



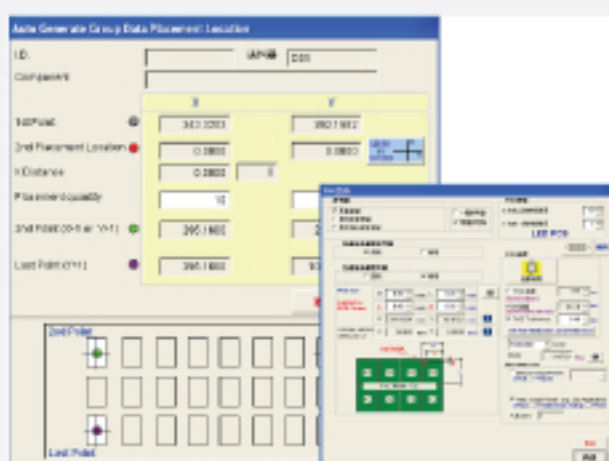
Support various PCB board type, includes, LED boards up to 1200 mm long (or option to 1800mm), flexible PCB, or circular PCB

Various LED Components



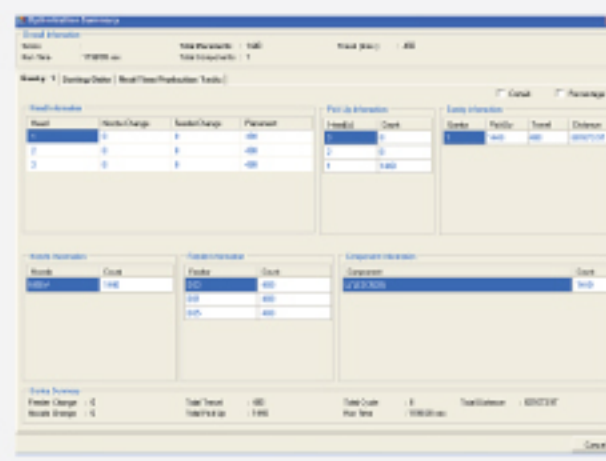
Flying vision alignment on various LED components as well as SMDs. Teflon® nozzles also available for sticky LED components

Windows based Software



With simply parameters inputs, the Windows-based software calculate the component coordination automatically

Software Tools

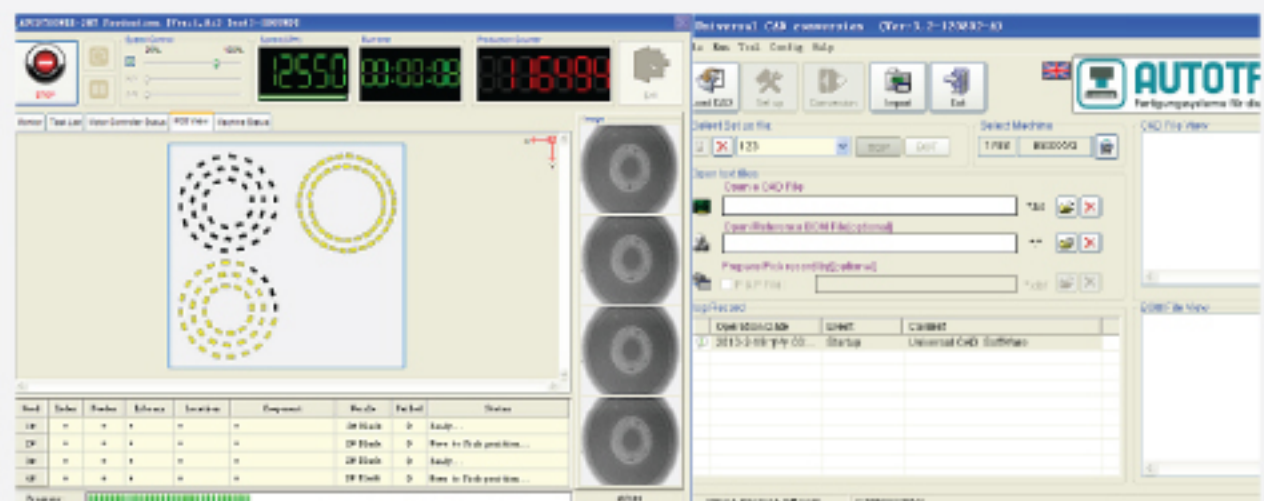


Software tools analyze placement data and component mix to provide optimum feeder arrangement that minimizes head travel and tool changes

Real Time Monitoring Screen

Real time monitoring screen for previewing production progress, production speed and production quantity during production

UCAD® universal CAD import and conversion for direct transfer of PCB data from ASCII, AutoCAD and Excel data formats



* We reserve the right to make changes without notice.

Product by

Distributor